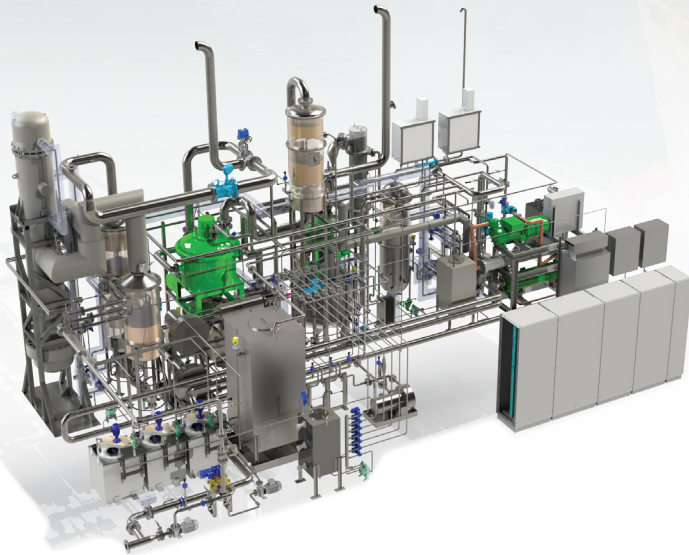




ERMA FIRST



CARBON FIT

CARBON CAPTURE & STORAGE

ERMA FIRST CARBON FIT
holds Approval in Principle (AiP) by



THE ERMA FIRST CARBON FIT PROMISE

ACHIEVING CARBON NEUTRAL SAILING

✔ CARBON FIT BENEFITS

- Extremely Low Footprint
- High Purity CO₂ Production
- Performance Stability
- Modular Installation
- Compatibility

✔ ERMA FIRST ADVANTAGE

- 45+ years of experience
- 3,500 served vessels
- In-house CFD expertise
- 24/7 technical support
- Worldwide service network
- Best-in-class turnkey solutions



DEEP SEA VESSELS & SHORT SEA SHIPPING

DESCRIPTION

CARBON FIT AMINE ABSORPTION SYSTEM

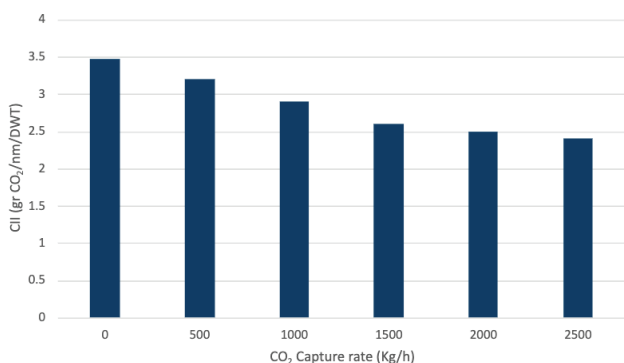
This system relies on the proven amine absorption technology. Our proprietary amine solvent absorbs CO₂ from the flue gas in a specially designed absorber. The solvent is then regenerated through the application of heat, releasing the CO₂ which is subsequently liquefied and stored under cryogenic conditions onboard. The regenerated amine solvent is then reused, creating a cyclical, efficient process for capturing and storing CO₂.

CARBON FIT CALCIUM HYDROXIDE SYSTEM

This system utilizes calcium hydroxide as an inorganic alkali agent to capture CO₂. The flue gas comes into contact with the calcium hydroxide solution in a specially designed reactor, creating a calcium carbonate slurry as a byproduct. This byproduct is then dehydrated and stored onboard until it can be disposed of at authorized facilities.

WHY ERMA FIRST CARBON FIT?

By choosing ERMA FIRST CARBON FIT, you're investing in advanced, effective technology that helps you meet and exceed the IMO's stringent emission reduction targets. It's not just about compliance; it's about contributing to a greener, more sustainable future for the maritime industry.



With increasing environmental regulations and growing awareness around climate change, the maritime industry's move towards carbon-neutral operations is imperative. ERMA FIRST is at the forefront of this revolution, offering a proprietary Carbon Capture & Storage (CCS) system (CARBON FIT) designed to meet the industry's rigorous emission reduction targets.

HEAD OFFICE

📍 Perama, Greece
☎ +30 210 40 93 000
✉ sales@ermafirst.com

FOLLOW US

🌐 www.ermafirst.com
🌐 [in](#) [X](#) [f](#) [y](#)



GLOBAL LEADER
IN SUSTAINABLE MARITIME SOLUTIONS